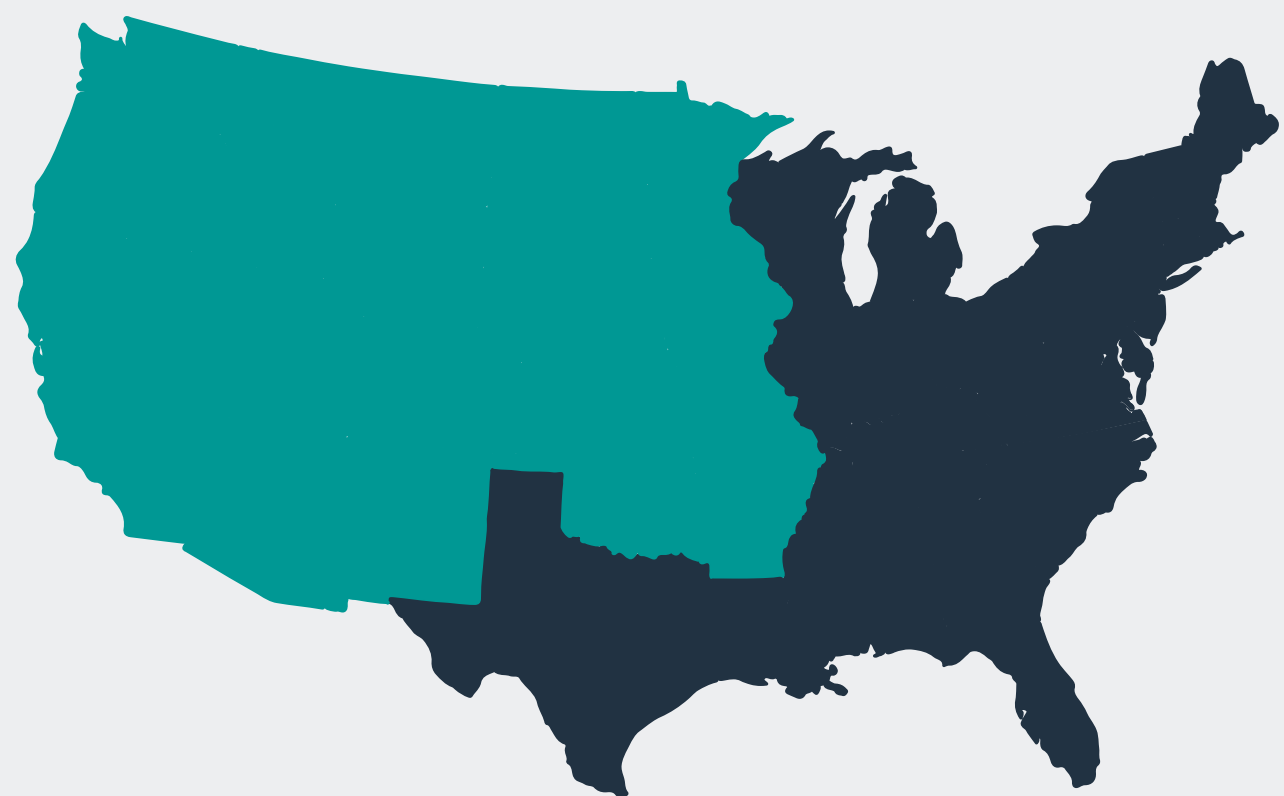


# EASTERN/WESTERN EQUINE ENCEPHALOMYELITIS (EEE/WEE)

## QUICK FACTS

### Eastern Equine Encephalomyelitis (EEE)

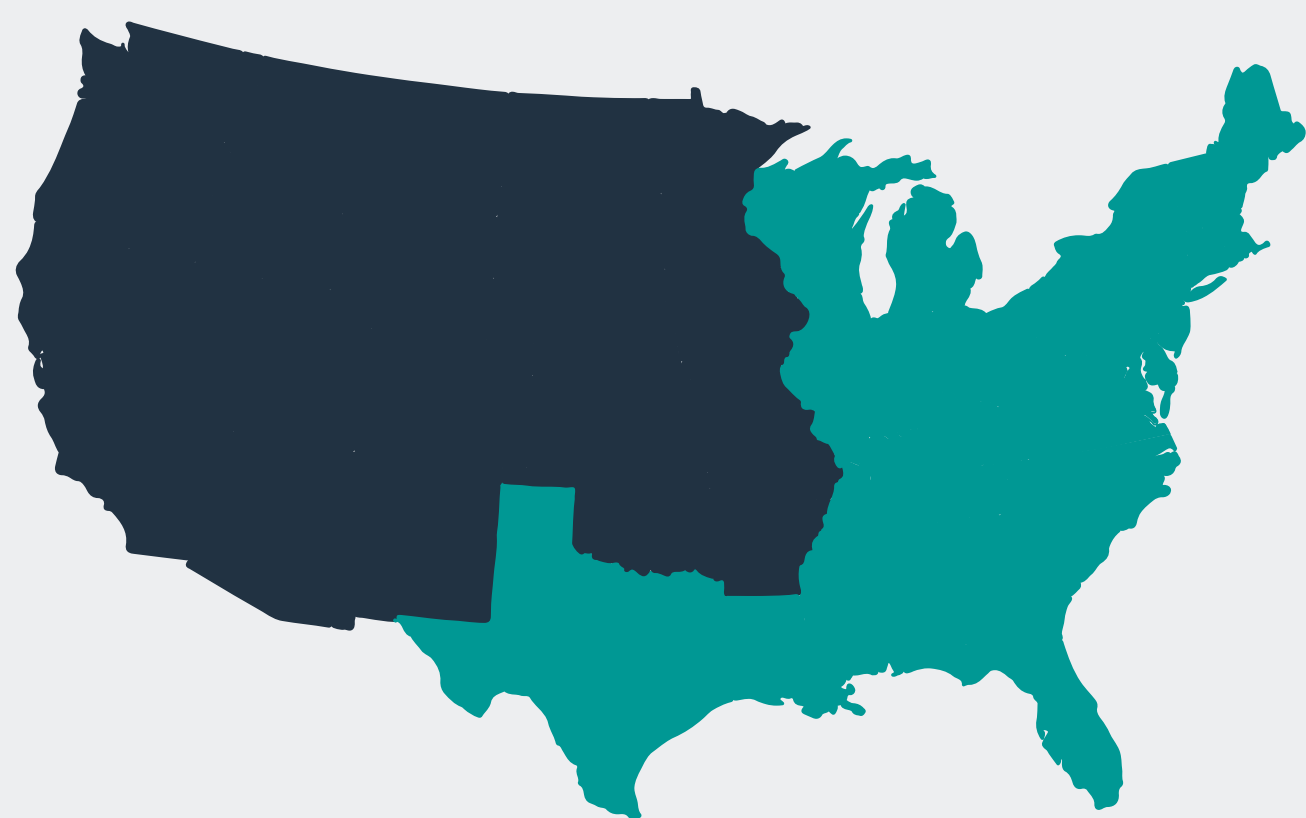
- Causes severe and often fatal neurologic disease in horses, humans and other mammals
- EEE is found primarily in the Southeastern United States, but cases have occurred in all states east of the Mississippi River and as far west as Texas



- 75-95% mortality rate
- Incubation period is 3-7 days

### Western Equine Encephalomyelitis (WEE)

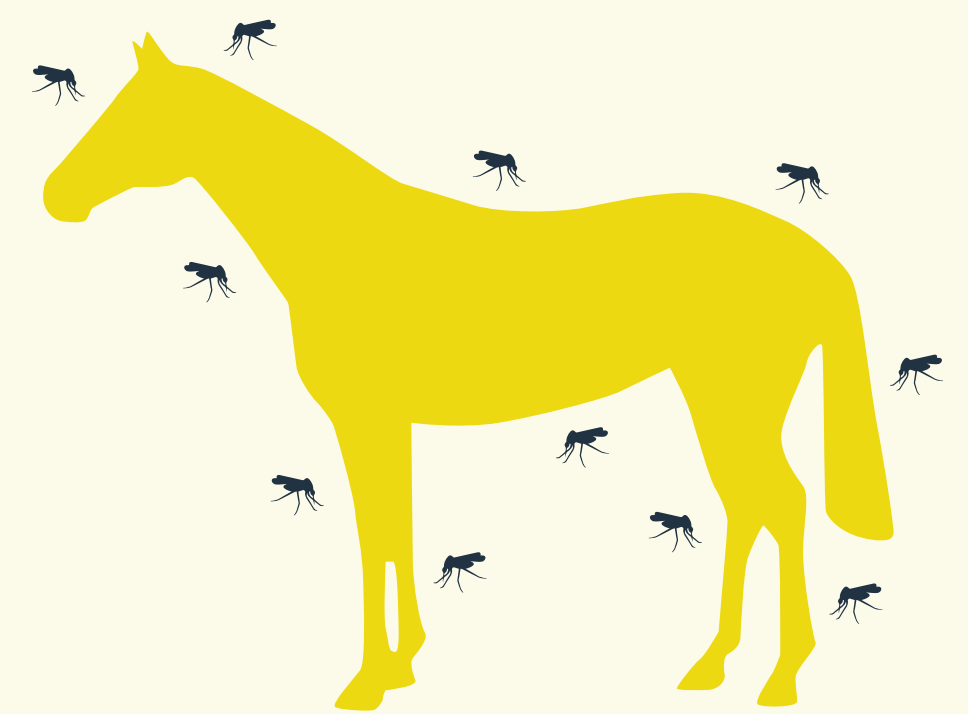
- Cases primarily occur in the Western United States and very infrequently in parts of the Midwest
- WEE has caused minimal disease in horses the last two decades, but continues to be detected in mosquitoes and birds throughout the Western states



- 20-40% mortality rate
- Incubation period is 2 days to 3 weeks

### General Facts

- EEE/WEE – viral infection of brain and spinal cord
- Infected horses are not contagious
- Virus transmission requires infected mosquito bite to occur
- EEE is most prevalent and deadly
- ALL horses should be vaccinated every year<sup>1</sup>



### Contact your veterinarian immediately if your horse is exhibiting any of these signs

- ⚠ Depression
- ⚠ Moderate to high fever (102.5-104.5°F)
- ⚠ Lack of appetite
- ⚠ Change in behavior
- ⚠ Muscle fasciculations (twitching)
- ⚠ Facial paralysis and weakness of the tongue
- ⚠ Incoordination/ataxia in one or all limbs
- ⚠ Head tilt, ear droop, difficulty swallowing
- ⚠ Recumbency (inability to rise)
- ⚠ Colic
- ⚠ Death



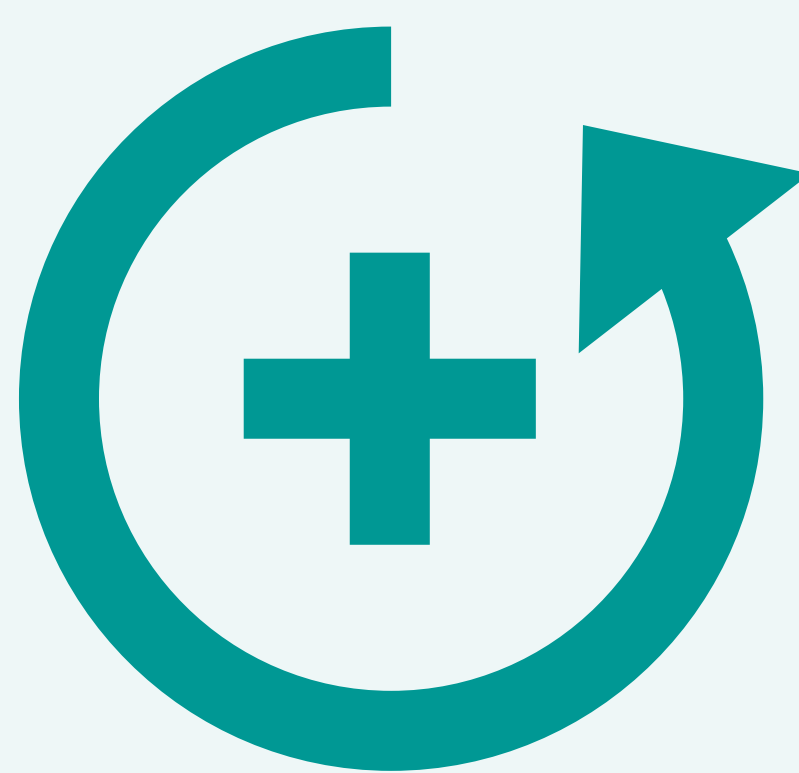
### Diagnosis

- Diagnosis is based on clinical signs
- Confirm with a blood test.



### Treatment and Recovery

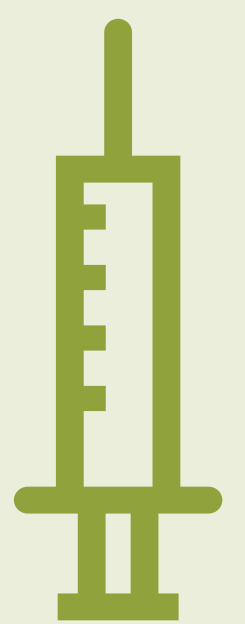
- There is no cure for EEE or WEE.
- Supportive care is focused on systematic support, managing inflammation and avoiding further injury



### Prevention

Vaccination is the No. 1 way to protect your horse:

- Initial vaccination followed by a booster in 3-4 weeks. Yearly vaccination thereafter
- More frequent boosters may be recommended in areas with year-round mosquito seasons or for immune-compromised horses



Minimize your horse's exposure to mosquitoes:

- Use insect repellents frequently
- Stable horses at dusk and dawn when mosquitoes are most active
- Eliminate or minimize standing water on property
- Stock tanks or ponds with mosquito-feeding fish
- Remove organic debris and items in which standing water can collect



#### ADDITIONAL INFORMATION

[www.equinediseasecc.org/disease-information](http://www.equinediseasecc.org/disease-information)  
[www.AAEP.org/guidelines](http://www.AAEP.org/guidelines)  
[www.aphis.usda.gov](http://www.aphis.usda.gov)

Talk to your veterinarian today about EEE/WEE. For more information on the PRESTIGE® line of EEE/WEE vaccines, visit [www.PrestigeVaccines.com](http://www.PrestigeVaccines.com).

<sup>1</sup> AAEP Core Vaccination Guidelines (aaep.org)

Brought to you by:

**PRESTIGE®**



BE SURE IT'S RIGHT FOR YOU.

The Science of Healthier Animals

2 Giralda Farms • Madison, NJ 07940 • [merck-animal-health-usa.com](http://merck-animal-health-usa.com) • 800-521-5767  
 Copyright © 2021 Intervet Inc., d/b/a/ Merck Animal Health, a subsidiary of Merck & Co., Inc.  
 All rights reserved. US-EQV-190800031

