

# IF IT FLIES, IT DIES

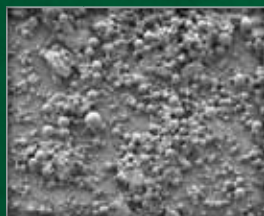


Control crawling and flying insects around animal facilities with **Grenade ER**.<sup>®</sup> It contains the most powerful insecticide available in a premise spray.

## GRENADe ER HAS MICROENCAPSULATION TECHNOLOGY

- Active ingredient, lambda-cyhalothrin, encased in a polymer membrane
- Protects lambda-cyhalothrin from damaging environmental conditions
- Allows for optimum time release action and quick insect knockdown
- Reduces absorption into the treated surfaces
- Normal application rate is 10,000 microcapsules per square inch (lethal dose for a fly is one microcapsule)

### Microencapsulated Lambda-cyhalothrin Molecules



Surface treated with Grenade ER magnified 500X



Microcapsule of Grenade ER clinging to a mosquito magnified 1,500X

**GRENADe ER**  
**PREMISE SPRAY**

Ask your Merck Animal Health representative for more information or call **800-521-5767**

## LONG LASTING

- Provides 3 months of premise protection
- Microencapsulation delays breakdown of active ingredient
- Effective on difficult-to-treat surfaces (vinyl, cement, other porous materials)

## POTENT

- Contains lambda-cyhalothrin, the most powerful insecticide available in a premise spray
- Twice the bioactivity of other common insecticides

## ECONOMICAL

- 8 oz bottle = 40 gallons of solution for treating up to 20,000 square feet
- Stays mixed, resists settling out

## BROAD SPECTRUM

Controls 28 insects:

- |                  |                          |                             |
|------------------|--------------------------|-----------------------------|
| • flies          | • darkling beetles       | • red flour beetles         |
| • crickets       | • hide beetles           | • saw-toothed grain beetles |
| • pillbugs       | • carrier beetles        | • wasps                     |
| • scorpions      | • ants                   | • carpenter bugs            |
| • spiders        | • bees                   | • clover mites              |
| • ticks          | • confused flour beetles | • sawbugs                   |
| • mosquitoes     | • fleas                  | • boxelder bugs             |
| • spider mites   | • lesser grain borers    |                             |
| • litter beetles |                          |                             |